



2001 BOSTON WHALER

280 CONQUEST - BAY DREAMING

\$109,900 USD

Key Features:

Many Updates
Garmin Electronics
2015 Mercury 300 Verados
Lift Stored

QUICK DETAILS

Type : Power

Year : 2001

Beam : 10' 4"

Cabins : 1

Sleeps : 2

Heads : 1

Fuel Type : Gas/Petrol

Hull Material : Fiberglass

Flag : United States Stabilizers : None

Fuel Tank (gallons) : 296

Fresh Water (gallons) : 40

Holding Tank (gallons) : 6

DESCRIPTION

2002 Boston Whaler 295 Conquest Cuddy Cabin offers a truly unique opportunity to own a beautiful, meticulously maintained boat from a world-class builder. The owner has spared no expense keeping this boat in top condition which includes MANY UPDATES. Updates include a full suite of Garmin electronics installed in May of 2018. The boat was repowered with 2015 Mercury 300 Verados. The sound system is fully updated as well as the head including all the plumbing. The boat was lift stored out of the saltwater and kept indoors. It has been washed and engines flushed after each use. The cockpit features a spacious seating arrangement perfect for entertaining guests and enjoying the sun and sea while maintaining great versatility in making this a fishing machine when the weather calls for an offshore run. You will not be disappointed!

SPECIFICATIONS

QUICK SPECS

Vessel Name: Bay Dreaming
City: Tierra Verde
State: Florida

Country: United States
Category: Power
Model: 280 Conquest
Model Year: 2001

DIMENSIONS

Length: 30'8"
Beam: 10' 4"

ACCOMMODATIONS

Cabins: 1
Heads: 1
Sleeps: 2

SPEED / WEIGHT

Fuel Capacity: 296

Water Capacity: 40
Holding Tank: 6

HULL INFORMATION

Hull Material: Fiberglass

ENGINE

Engine 1

Engine Make: Mercury
Engine Model: 300 Verado
Serial #: 2B209171
Engine Year: 2015
Power HP: 300.00
Power KW: 0.00
Fuel Type: Gas/Petrol
Engine Hours: 165.00
Engine Location: Port

Engine 2

Engine Make: Mercury
Engine Model: 300 Verado
Serial #: 2B212073
Engine Year: 2015
Power HP: 300.00
Power KW: 0.00
Fuel Type: Gas/Petrol
Engine Hours: 165.00
Engine Location: Starboard

FULL DETAILS

ELECTRONICS

- Garmin GPS MAP 7607
- Garmin GPS MAP 7612
- Garmin Perestal for GMR 404xHD/406xHD
- Garmin GPS 19x NNMEA 2000
- Garmin GHP Reactor Course Computer
- Garmin Panoptix PS31
- Garmin Auto Pilot
- Garmin Blue Chart g2 Vision HD

EQUIPMENT

- 4 kw Kohler Genset
- Battery Charger Converter
- Bow Thruster (separate batteries)
- Windlass
- Livewell
- Fish Boxes
- Gunwale Mounter Rod Holders
- A/C
- Lounge and Dining Area
- Double Berth
- Stove Top
- Microwave
- Sink
- Refrigerator
- Head with Shower
- Stereo System
- Underwater Lights
- Spot Lights
- Light Bar
- Out Riggers
- Trim Tabs
- 30 amp Shore Power
- Swim Ladder
- Swim Platform
- Transom Door
- Cockpit Cutting Surface and Sink
- Tackle Drawers

GALLERY



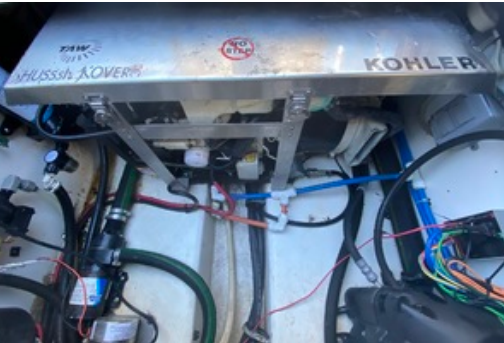
2002 Boston Whaler 295 Conquest - Bay Dreaming - Profile



2002 Boston Whaler 295 Conquest - Outboard Engines



2002 Boston Whaler 295 Conquest - Outboard Engines



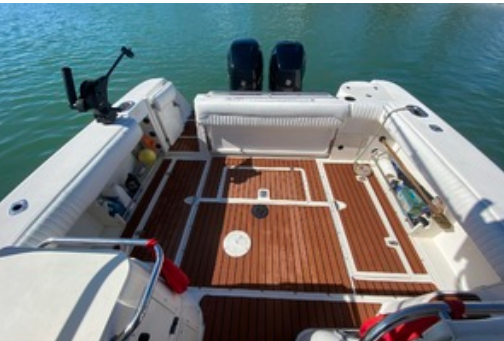
2002 Boston Whaler 295 Conquest - Electrical



2002 Boston Whaler 295 Conquest - Electrical



2002 Boston Whaler 295 Conquest - Cockpit Doorway



2002 Boston Whaler 295 Conquest - Bay Dreaming - Cockpit



2002 Boston Whaler 295 Conquest - Cockpit



2002 Boston Whaler 295 Conquest - Cockpit



2002 Boston Whaler 295 Conquest - Cockpit



2002 Boston Whaler 295 Conquest - Bay Dreaming Helm



2002 Boston Whaler 295 Conquest - Helm



Galati Yacht Sales

12030 Gandy Blvd N.
St. Petersburg FL 33702 USA
Phone: 1-727-576-8336
Fax: 1-727-576-0314
<https://www.galatiyachts.com>



Keith Corso

Yacht Broker
12030 N. Gandy Blvd
St. Petersburg FL 33370 USA
Office: 1-727-576-8336
Cell: 1-813-523-6078
Email:
kcorso@galatiyachts.com

Disclaimer: The Company offers the details of this vessel in good faith but cannot guarantee or warrant the accuracy of this information nor warrant the condition of the vessel. A buyer should instruct his agents, or his surveyors, to investigate such details as the buyer desires validated. This vessel is offered subject to prior sale, price change, or withdrawal without notice.

Mechanical Disclaimer: Engine hours are as of the date of the original listing and are a representation of what the listing broker is told by the owner and/or actual reading of the engine hour meters. The broker cannot guarantee the true hours. It is the responsibility of the purchaser and/or his agent to verify engine hours, warranties implied or otherwise and major overhauls as well as all other representations noted on the listing brochure.

© International Yacht Brokers Association - Keith Corso, Active Member - Vessel ID: 2770445