



## 2014 PRINCESS

V48 - SWEET DREAMS II

**\$715,000 USD**

### **Key Features:**

Lightweight Hull  
Spacious Cabin  
Hydraulic Swim Platform

## QUICK DETAILS

Type : Power

Year : 2014

Beam : 13' 6"

Draft Max : 3' 9"

Cabins : 2

Sleeps : 5

Heads : 2

Speed Max (knots) : 31

Speed Cruise (knots) : 28

Fuel Type : Diesel

Hull Material : Fiberglass

Flag : United States Stabilizers : None

Fuel Tank (gallons) : 350

Fresh Water (gallons) : 96

Holding Tank (gallons) : 36

## DESCRIPTION

This 2014 Princess V48 is represented by Galati Yacht Sales Tampa, Fl. and "Sweet Dreams II" is a very well equipped late model 2014 Princess V-48 offering sleek, dynamic and exceptionally spacious accommodations. The Princess V-48 is a highly versatile sports yacht delivering excitement and comfort in equal measure. Her light-weight, resin infused hull is designed to quicken the transition to planning speeds and so improve efficiency while providing a performance that is both assured and exhilarating. She is equally competent at low speeds with the latest Volvo IPS engines and drive system, making even the tightest of marina maneuver's a simple and relaxed operation.

The main deck is enclosed and features a spacious salon which provides a wonderful escape from the heat of the day. This area can be simply transformed for true "open boating" via a large powered roof and triple sliding doors that connect to the aft cockpit.

The bathing platform is large enough to stow a tender and is hydraulically operated making water sports easily accessible.

Below decks the lower salon provides a more intimate haven in which to relax and is ideally located adjacent to the galley which has been equipped to provide everything needed for an extended stay on board. Two large cabins provide sumptuous accommodations with a vast and exceptionally light owner's stateroom amidships and a forward guest cabin with the option of a "scissor berth" system to create a double or twin beds as required.

Conveniently Located on Gandy Blvd North in St. Petersburg, FL.

Call Today for a Showing Appointment.

# SPECIFICATIONS

## QUICK SPECS

Vessel Name: Sweet Dreams II  
City: St Petersburg  
State: Florida

Country: United States  
Category: Power  
Model: V48  
Model Year: 2014

## DIMENSIONS

Length: 48'0"  
Draft: 3'9"  
Beam: 13' 6"

## ACCOMMODATIONS

Cabins: 2  
Heads: 2  
Sleeps: 5

## SPEED / WEIGHT

Cruising Speed: 28  
Fuel Capacity: 350

Water Capacity: 96  
Holding Tank: 36

## HULL INFORMATION

Hull Material: Fiberglass

## ENGINE

### Engine 1

Engine Make: Volvo Penta  
Engine Model: IPS 600  
Engine Year: 2014  
Engine Type: Inboard  
Power HP: 435.00  
Fuel Type: Diesel  
Engine Hours: 861.00  
Engine Location: Port

### Engine 2

Engine Make: Volvo Penta  
Engine Model: IPS 600  
Engine Year: 2014  
Engine Type: Inboard  
Power HP: 435.00  
Fuel Type: Diesel  
Engine Hours: 861.00  
Engine Location: Starboard

# FULL DETAILS

## SALON - UPPER

- High gloss Cherry cabinetry
- Mini blinds
- Large U-shaped settee
- Custom seat covers - removable
- Fusion AM/FM/CD stereo
- 32" Flat screen TV on electric lift
- Solid teak flooring
- Reverse cycle marine A/C
- Helm station
- Large full beam sun-roof
- Custom high gloss dinette table with inlay
- Triple sliding glass entry doors
- Credenza with bottle and glass storage
- Refrigerator

## SALON - LOWER

- Lower dinette table on telescopic legs with in-fill cushion
- Two large opening portlites
- 32" LED TV with DVD player
- Central vacuum
- Mini blinds
- High gloss Cherry cabinetry
- Upper storage cabinets
- Carpet covers
- Storage below dinette seats

## GALLEY

- Avonite countertops
- Garbage disposal - New
- Princess cutlery - 6 place setting
- Princess china - 6 place setting
- Princess glasses - 6 wine and 6 tumbler
- 3 Burner cooktop
- Combo microwave/convection oven
- Full size refrigerator with separate freezer
- Storage drawers
- Large opening portlites
- Mini blinds
- 110 Volt GFCI receptacle
- Vent fan
- Large stainless steel sink
- Hardwood floor
- Abundant storage

## MASTER STATEROOM

- Queen berth with storage below
- Drawer and storage lockers
- Love seat
- 32" LED TV with DVD player
- Pillow package
- Large windows
- Hanging lockers
- Large side windows
- Mini blinds
- Air conditioned / heated
- Side tables
- Credenza with drawers
- High gloss Cherry cabinetry
- Privacy door

## MASTER HEAD

- Large separate shower
- Vanity with storage
- Carrara white counter tops
- Koko white flooring
- Vessel style sink
- 110 Volt GFCI outlet
- Marine toilet
- Privacy door
- Vent fan
- Medicine cabinet

## VIP STATEROOM - FORWARD

- Scissor berth - makes into full size berth or two single berths
- Pillow package
- 28" LED TV with DVD player
- Storage drawers -4
- Large hanging locker
- En-suite head
- Deck hatch - overhead
- Fusion stereo AM/FM/CD
- Privacy door
- Two opening portlights
- Mini blinds
- High gloss Cherry cabinetry

## GUEST HEAD

- Large separate shower
- Vanity with storage
- Carrara white countertops
- Koko white flooring
- Vessel style vanity sink
- Medicine cabinet
- 110 volt GFCI outlet
- Vent fan

## HELM

- 2 Helm seats - leather
- Joystick controls
- Volvo binnacle
- Opening side window - electric
- Tilt steering
- Bow thruster control
- Trim tab controls
- Windlass control
- Spotlight control
- Excellent visibility
- Volvo digital engine display

## ELECTRONICS

- Garmin 5212 color GPS plotter / radar
- Garmin autopilot GHC10
- Garmin 4Kw open array radar
- Garmin digital depth
- Garmin VHF300 handset radio
- SAT TV system
- Compass
- Wifi booster

## ELECTRICAL SYSTEM

- US electrical system 120/240- 60hz
- Generator 13.5Kw with 1349 hours
- 24 Volt DC system
- Glendenning cable master
- Shore power cord - 50amp
- Voltage stabilizer transformer
- US outlets
- Distribution panel
- Bonding system
- Batteries

## ENGINE ROOM

- Engine room blowers
- Twin Volvo diesels IPS600 with 435HP each
- Automatic / manual bilge pumps - 3
- Automatic / manual fire extinguisher engine room
- Assorted spare parts and pumps
- Freshwater filter
- Air conditioner compressors
- Freshwater cooled engines
- Tool chest
- Overhead storage and spare parts
- Spare fuel filters -3

## BOW DECK

- Cushion and cover
- Stainless steel "Ultra Anchor"
- All chain rode
- Windlass with foot controls
- Windshield cover
- Stainless steel welded bow rail



# GALLERY



2014 Princess V48 - Profile



2014 Princess V48 - Upper Salon  
Dinette



2014 Princess V48 - Upper Salon  
Dinette



2014 Princess V48 - High Gloss Custom  
Table



2014 Princess V48 - Upper Salon -  
Removable Covers



2014 Princess V48 - Custom Table with  
Inlay



2014 Princess V48 - Upper Salon TV



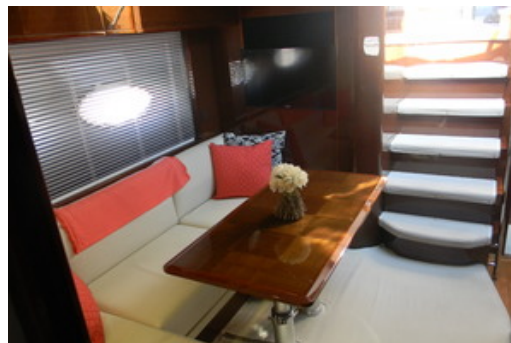
2014 Princess V48 - Audio System/SAT  
TV Receiver



2014 Princess V48 - Upper Salon  
Refrigerator



2014 Princess V48 - Lower Salon  
Dinette



2014 Princess V48 - Lower Salon  
Dinette



2014 Princess V48 - Galley



## Galati Yacht Sales

12030 Gandy Blvd N.  
St. Petersburg FL 33702 USA  
Phone: 1-727-576-8336  
Fax: 1-727-576-0314  
<https://www.galatiyachts.com>



## Kerry Alexander

Yacht Broker  
12030 Gandy Blvd N.  
St. Petersburg FL 33702 USA  
Office: 1-727-576-8336  
Cell: 1-941-920-0774  
Email: [kalex@galatiyachts.com](mailto:kalex@galatiyachts.com)

Disclaimer: The Company offers the details of this vessel in good faith but cannot guarantee or warrant the accuracy of this information nor warrant the condition of the vessel. A buyer should instruct his agents, or his surveyors, to investigate such details as the buyer desires validated. This vessel is offered subject to prior sale, price change, or withdrawal without notice.

Mechanical Disclaimer: Engine hours are as of the date of the original listing and are a representation of what the listing broker is told by the owner and/or actual reading of the engine hour meters. The broker cannot guarantee the true hours. It is the responsibility of the purchaser and/or his agent to verify engine hours, warranties implied or otherwise and major overhauls as well as all other representations noted on the listing brochure.

© International Yacht Brokers Association - Kerry Alexander, Active Member - Vessel ID: 2766013